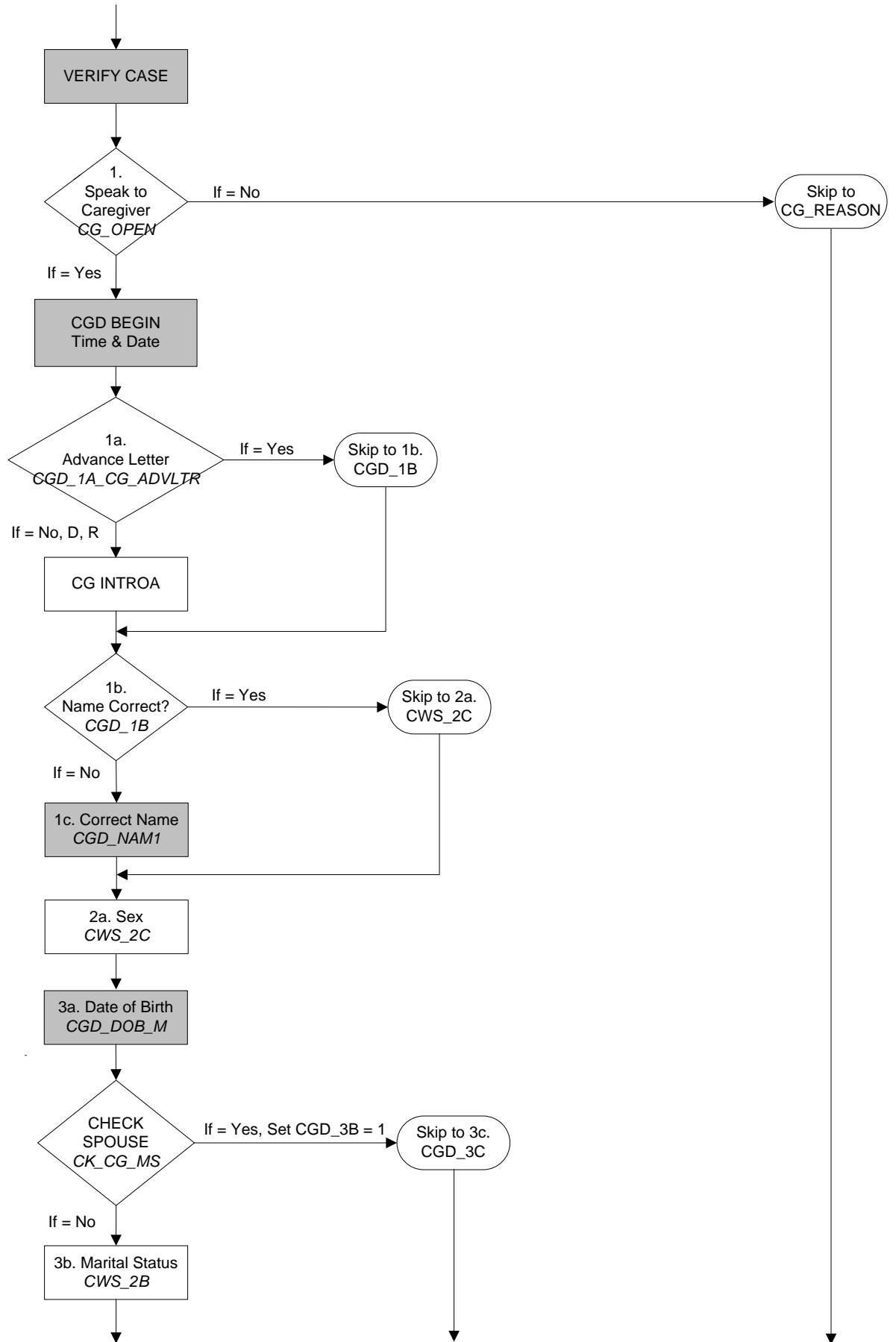


# 2004 NLTCS CAREGIVER QUESTIONNAIRE FLOWCHART

## Caregiver Demographics

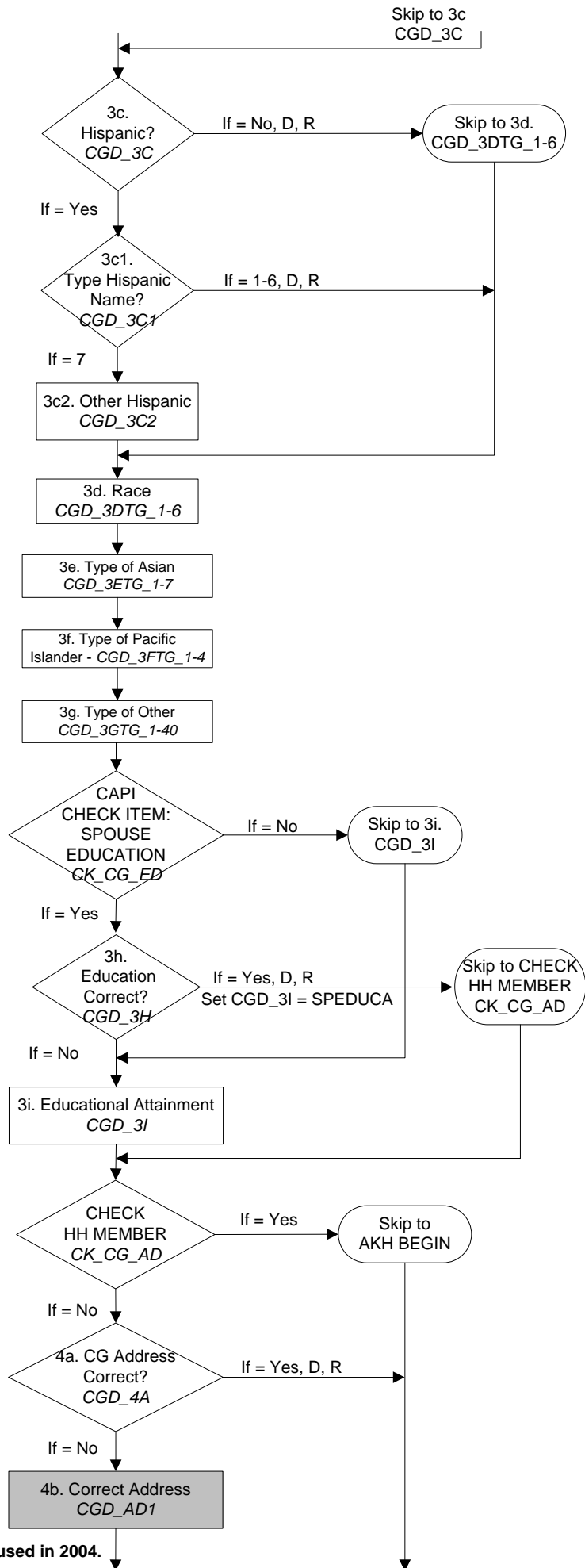


Key:

Questionnaire varies from qcode

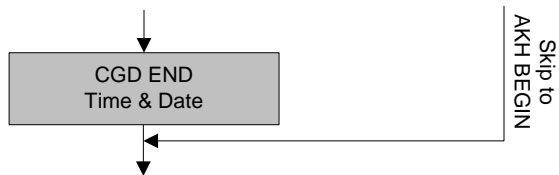
Variable not in data file

Not in data file, varies from qcode

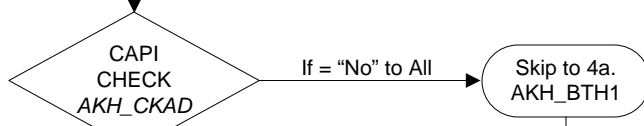
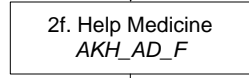
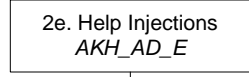
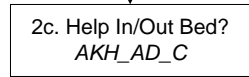
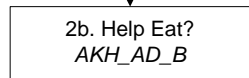
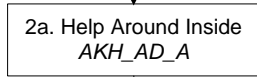
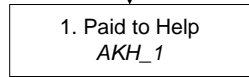
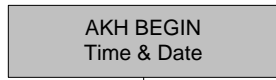


Skip to CG\_REASON

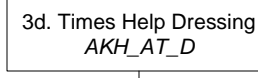
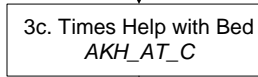
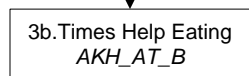
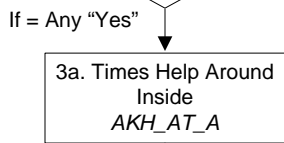
Note: Question 4c not used in 2004.



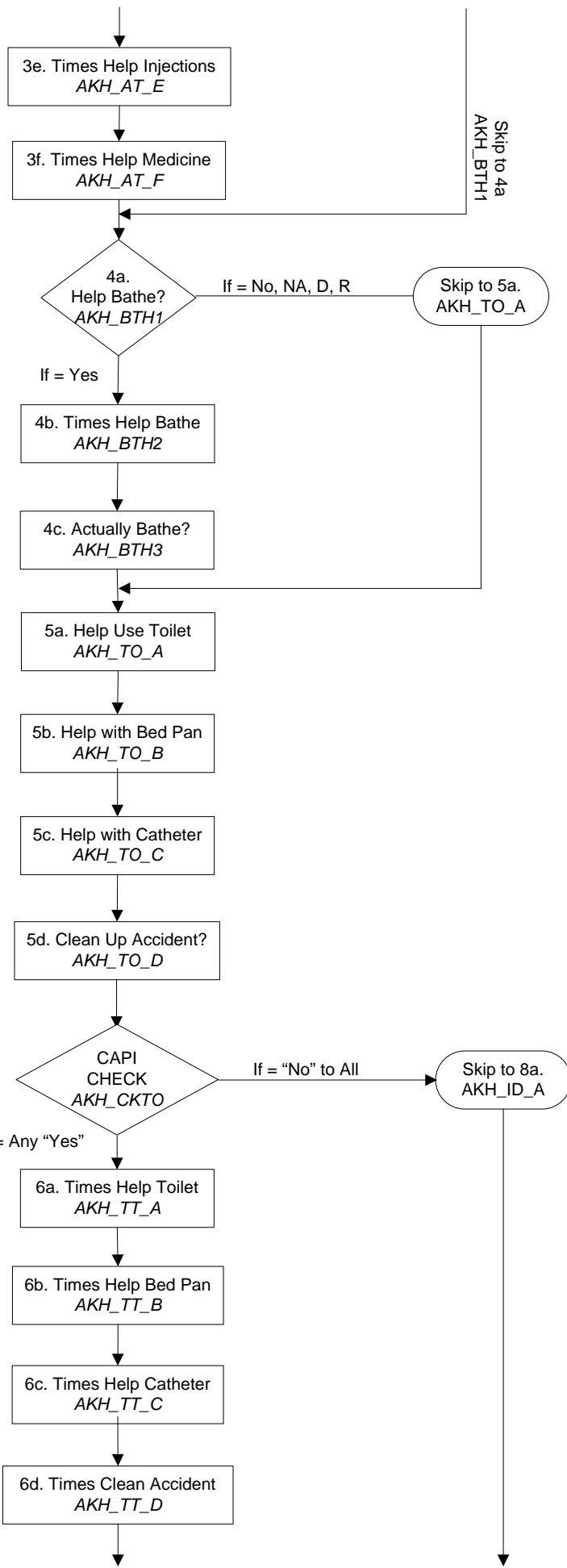
## SECTION A: Amounts and Kinds of Help



For all "Yes" answers (1-2f), ask only the relevant corresponding questions 3a - 3f.



Skip to CG\_REASON



Skip to 4a  
AKH\_BTH1

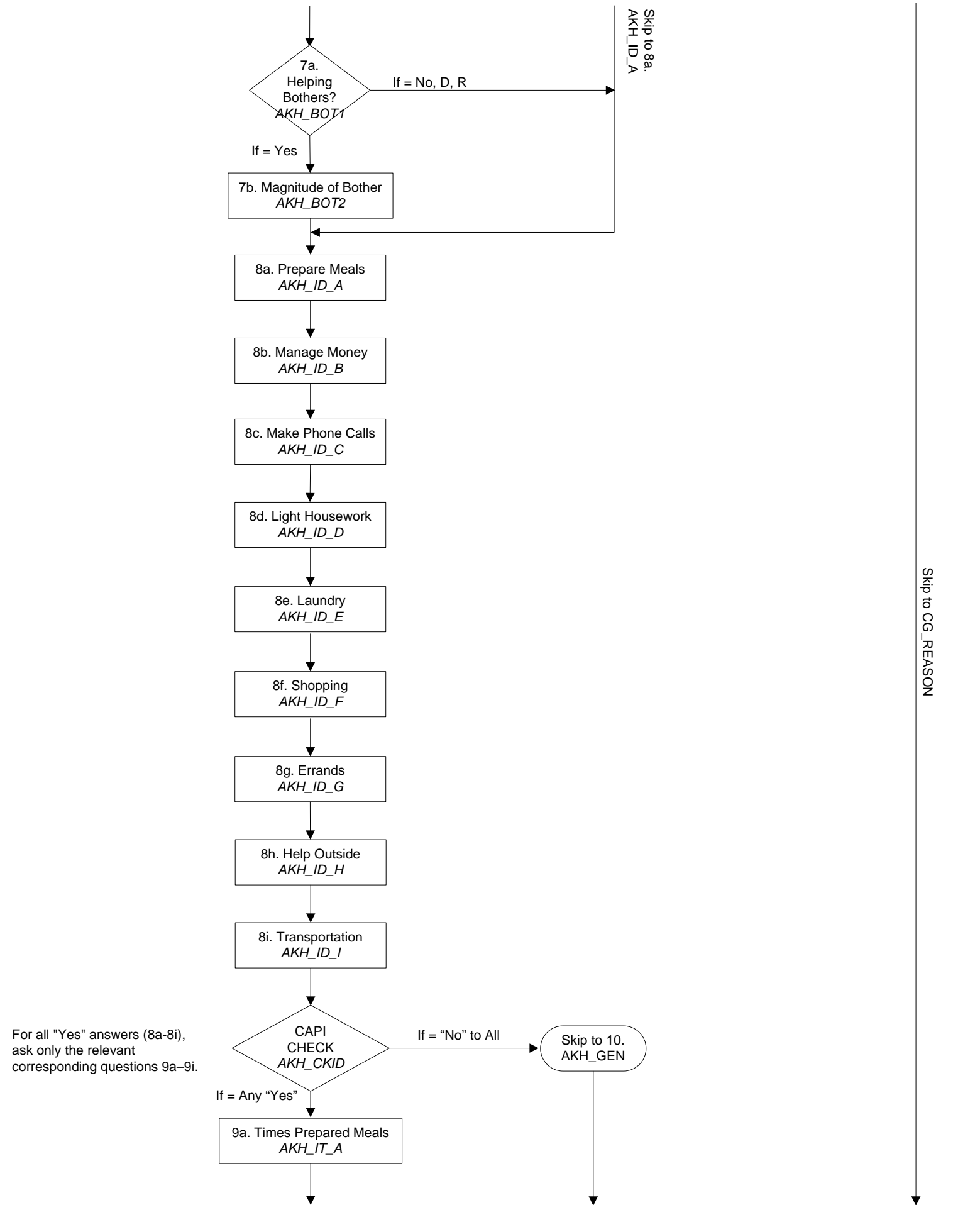
Skip to 5a.  
AKH\_TO\_A

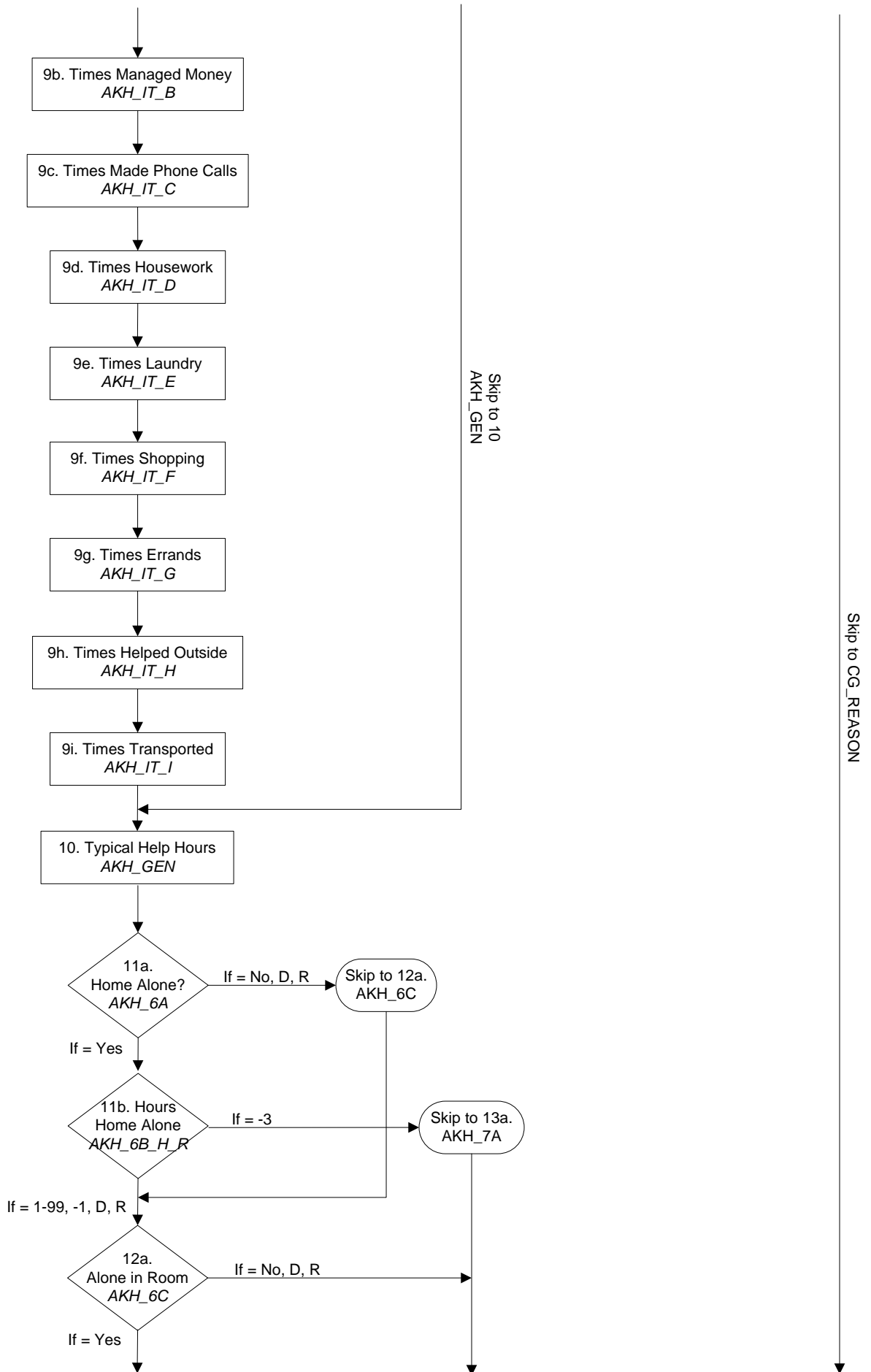
Skip to CG\_REASON

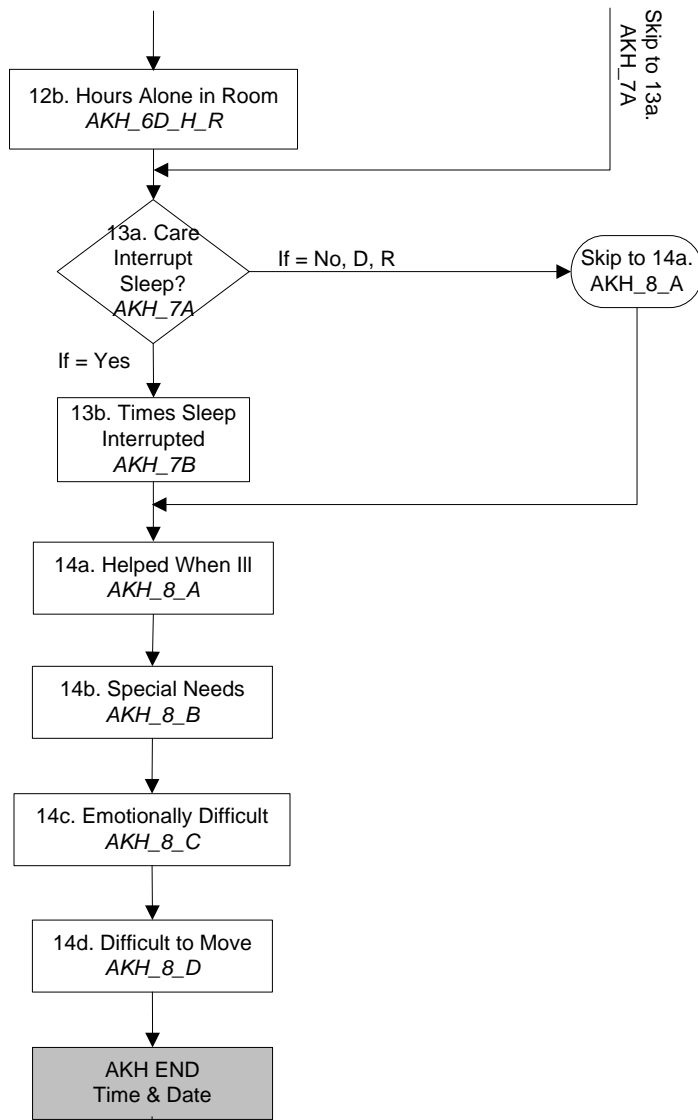
For all "Yes" answers (5a-5d),  
ask only the relevant  
corresponding questions 6a - 6f.

If = Any "Yes"

Skip to 8a.  
AKH\_ID\_A



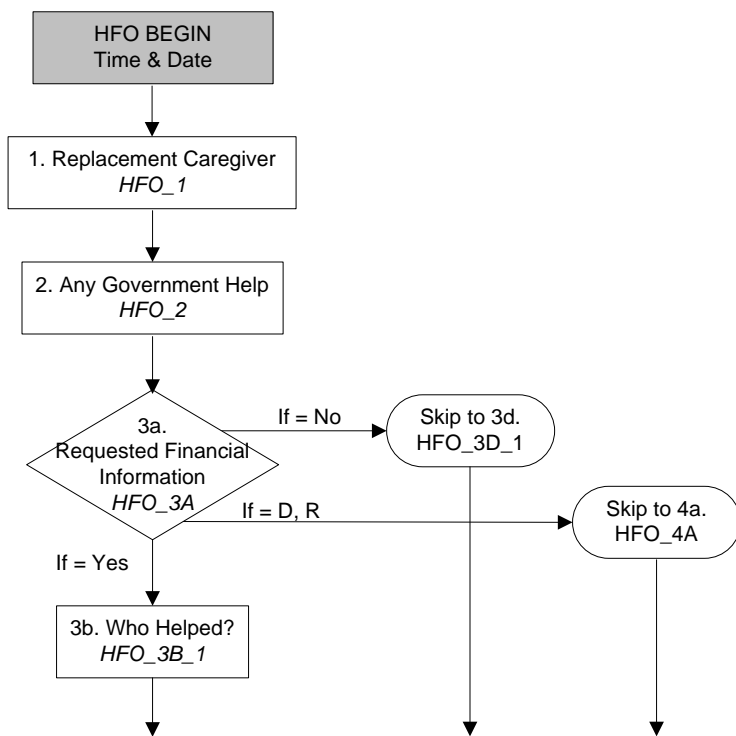


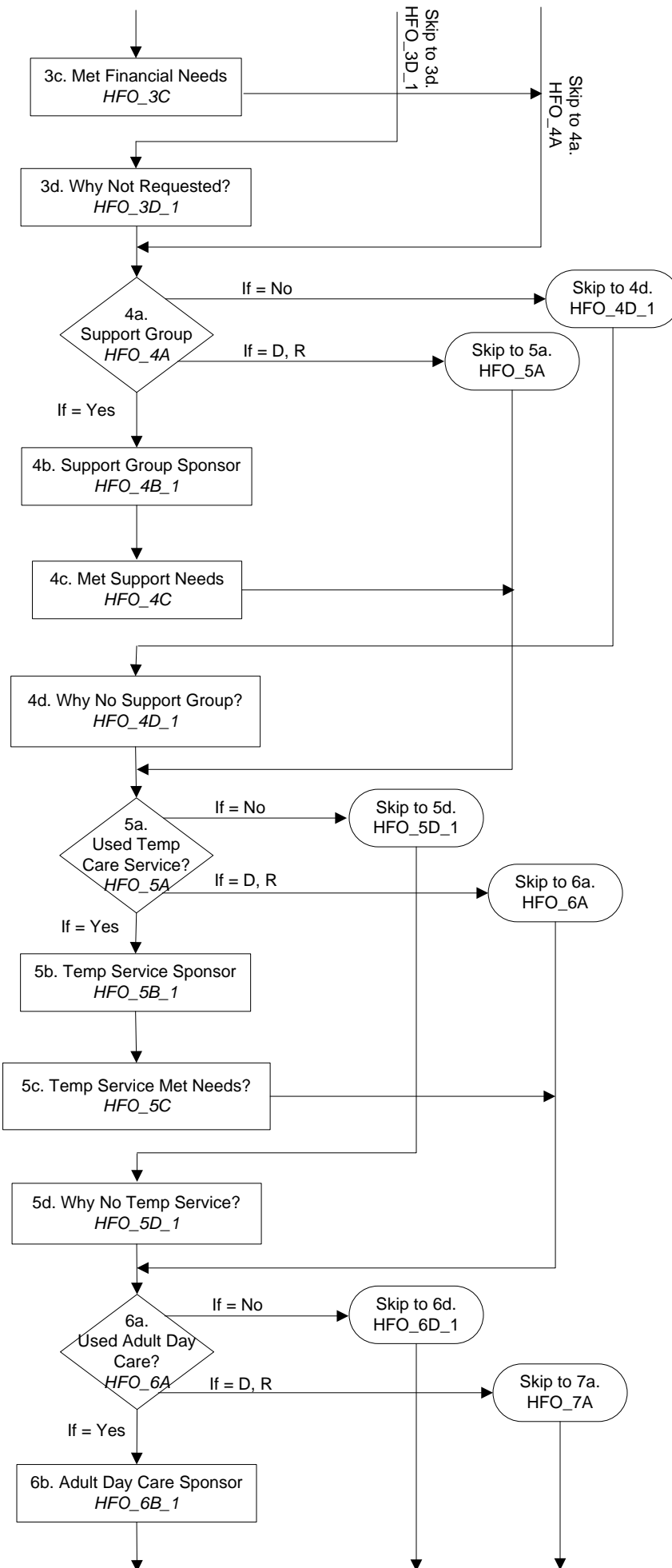


Skip to 13a.  
AKH\_7A

Skip to CG\_REASON

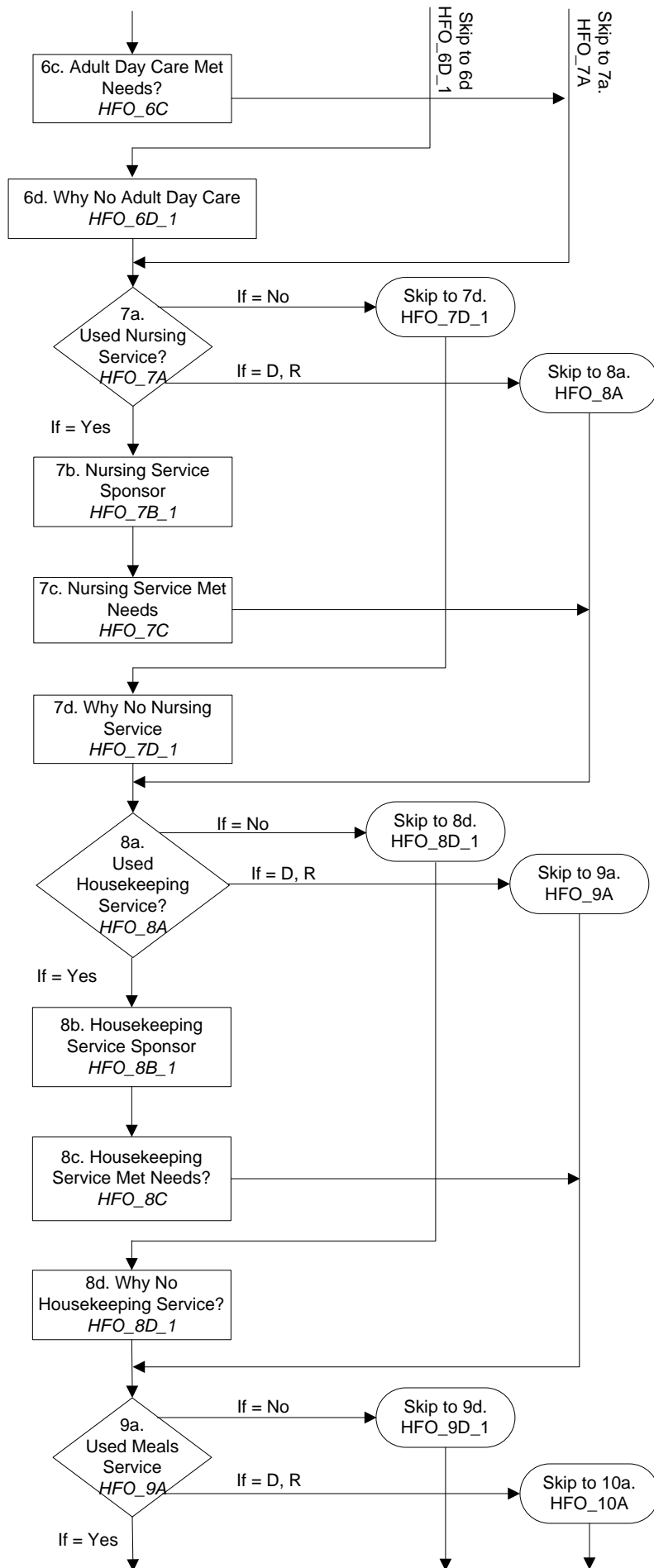
## SECTION B: Help from Others

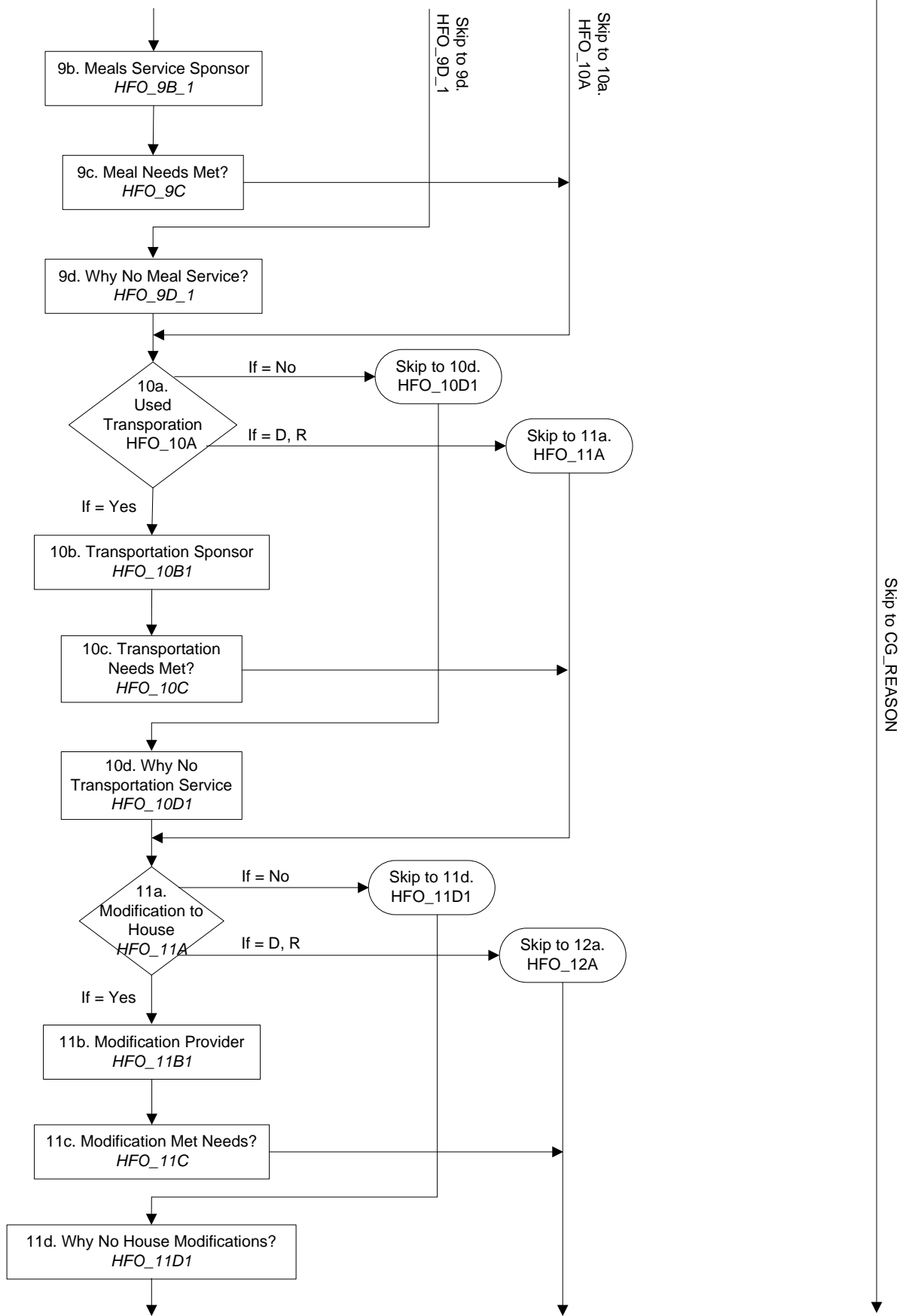


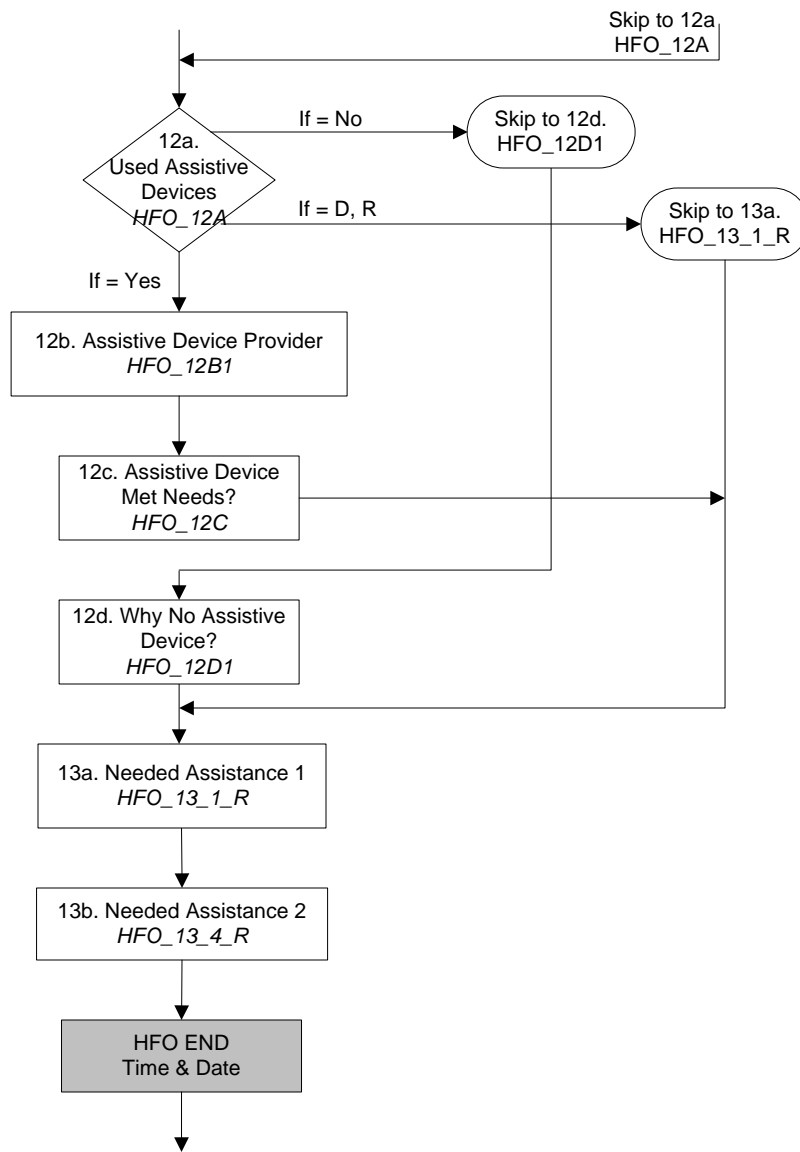


Skip to CG\_REASON



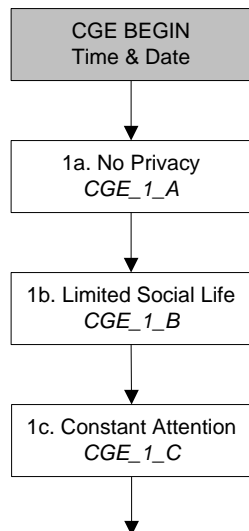


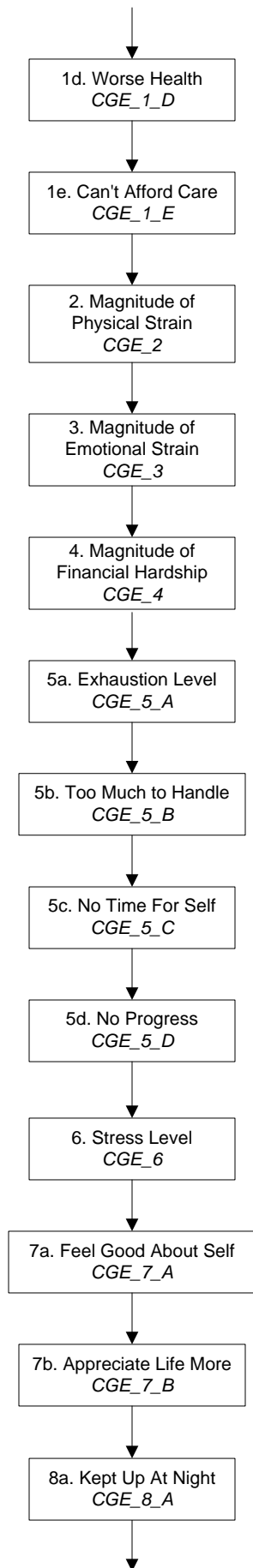




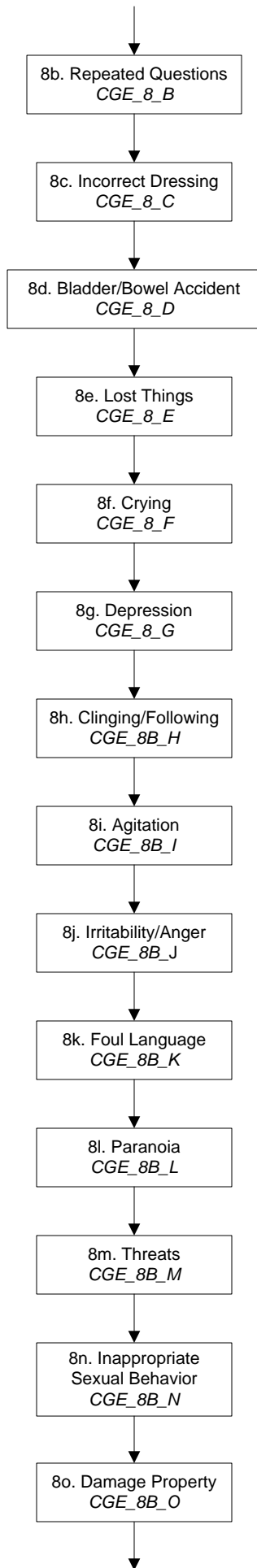
Skip to CG\_REASON

## SECTION C: Caregiver's Experience

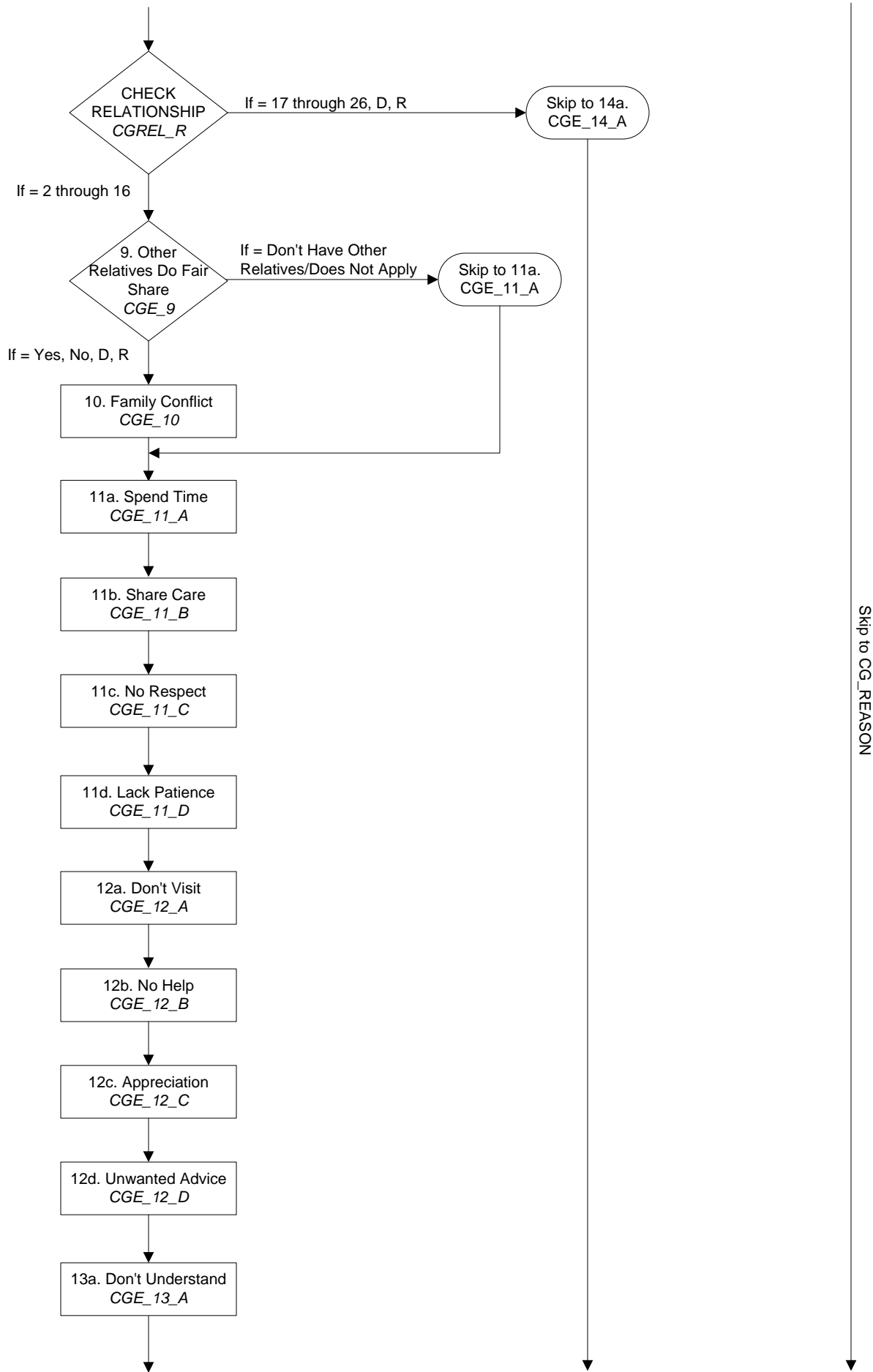


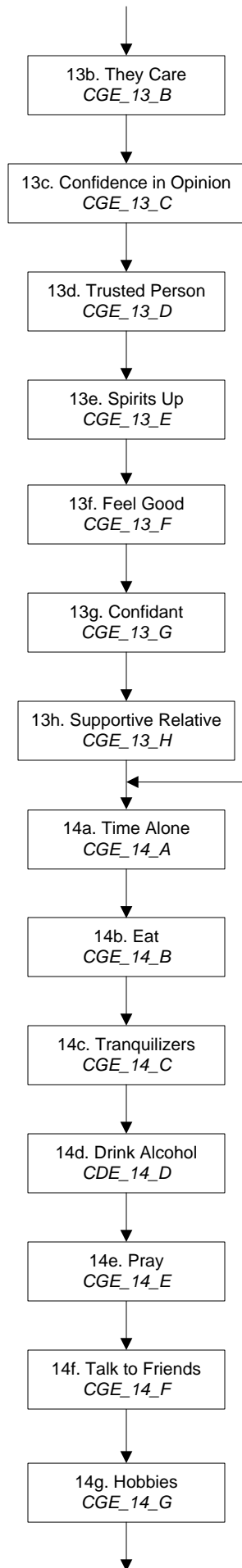


Skip to CG\_REASON



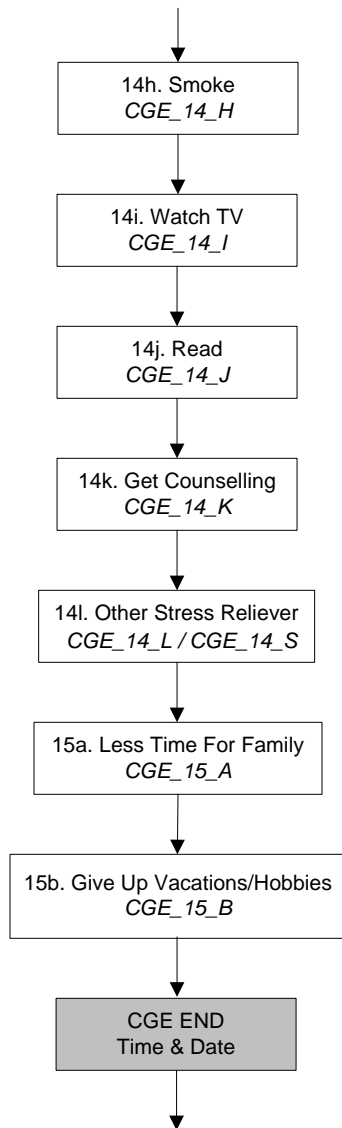
Skip to CG\_REASON





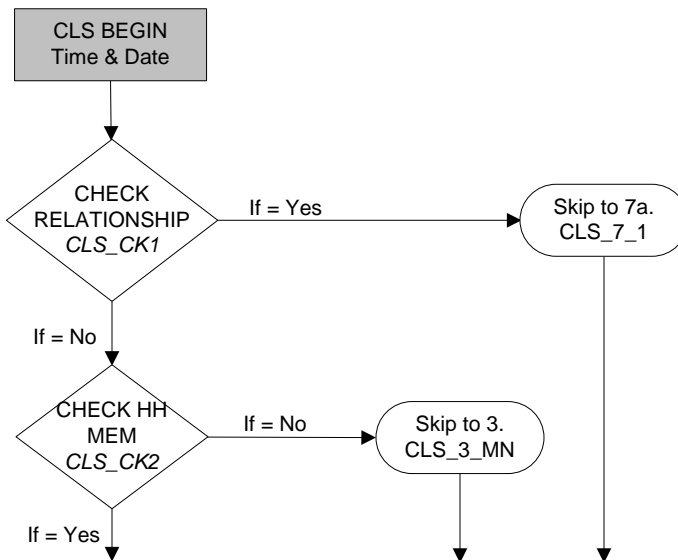
Skip to 14a  
CGE\_14\_A

Skip to CG\_REASON

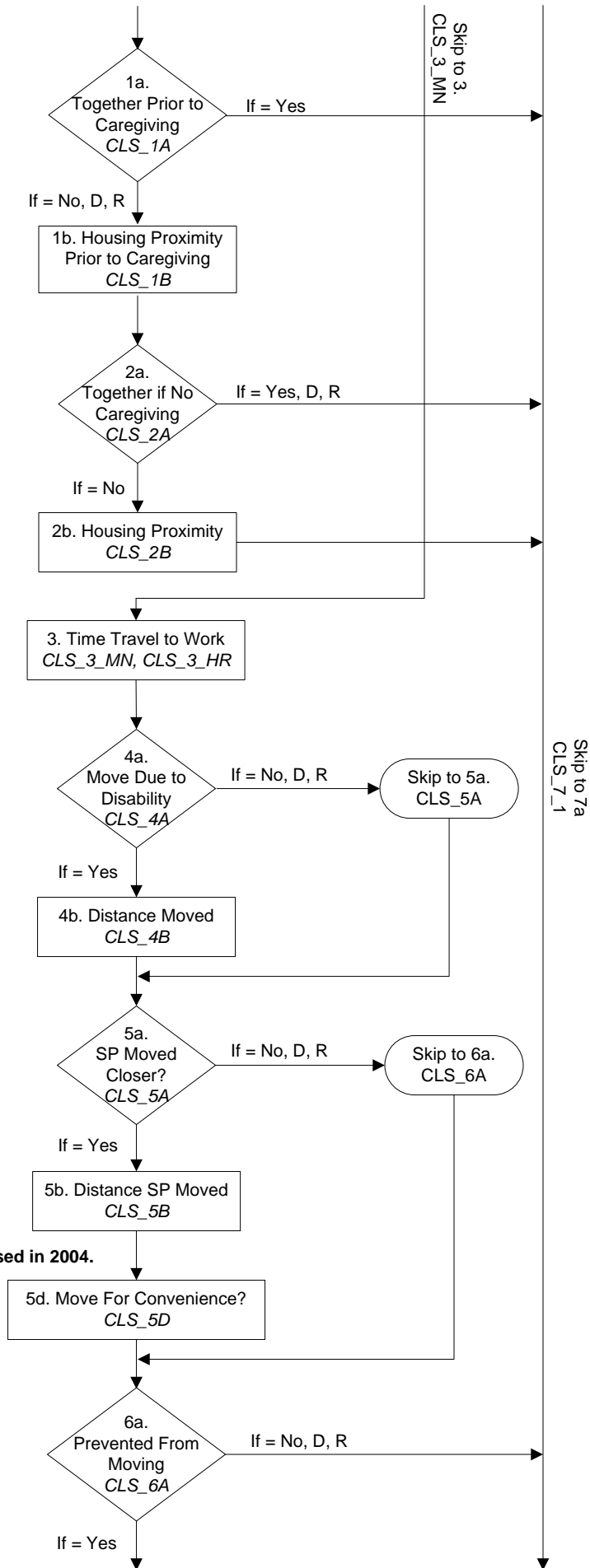


Skip to CG\_REASON

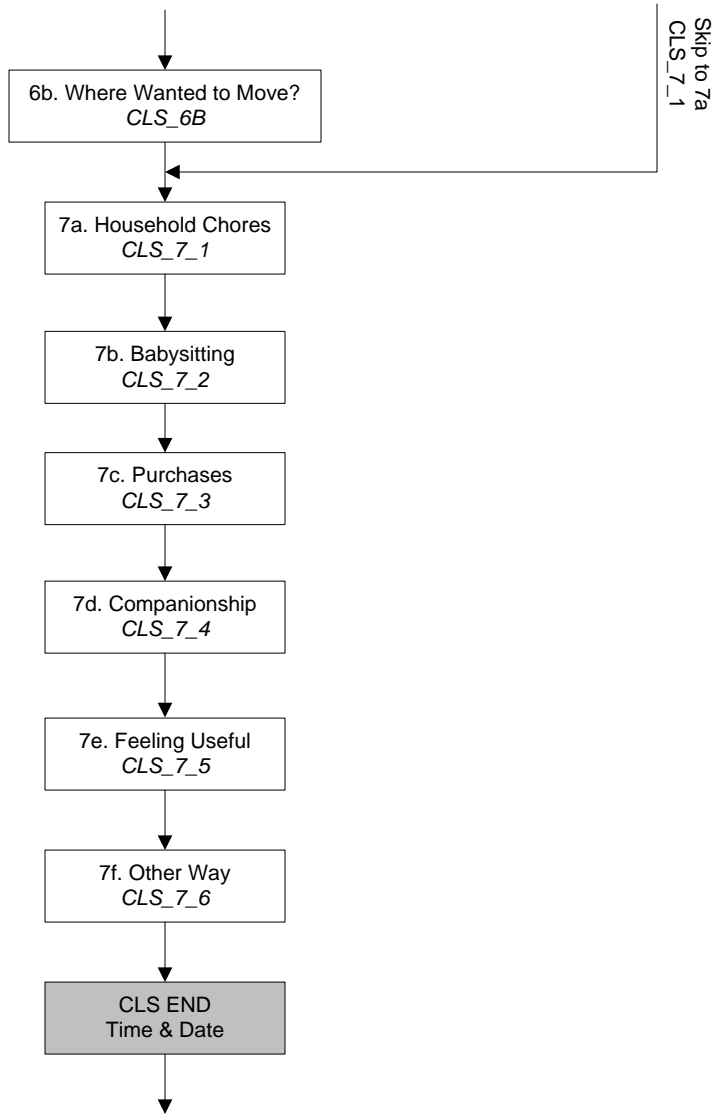
## SECTION D: Caregiver's Living Situation





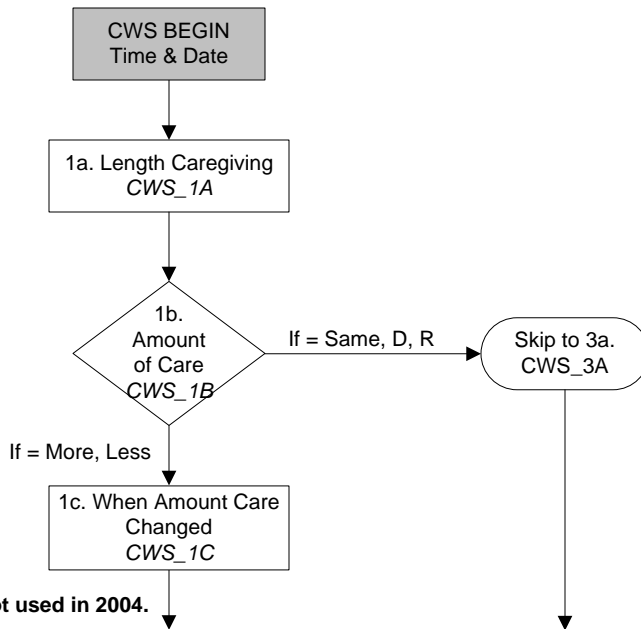


Note: Question 5c not used in 2004.

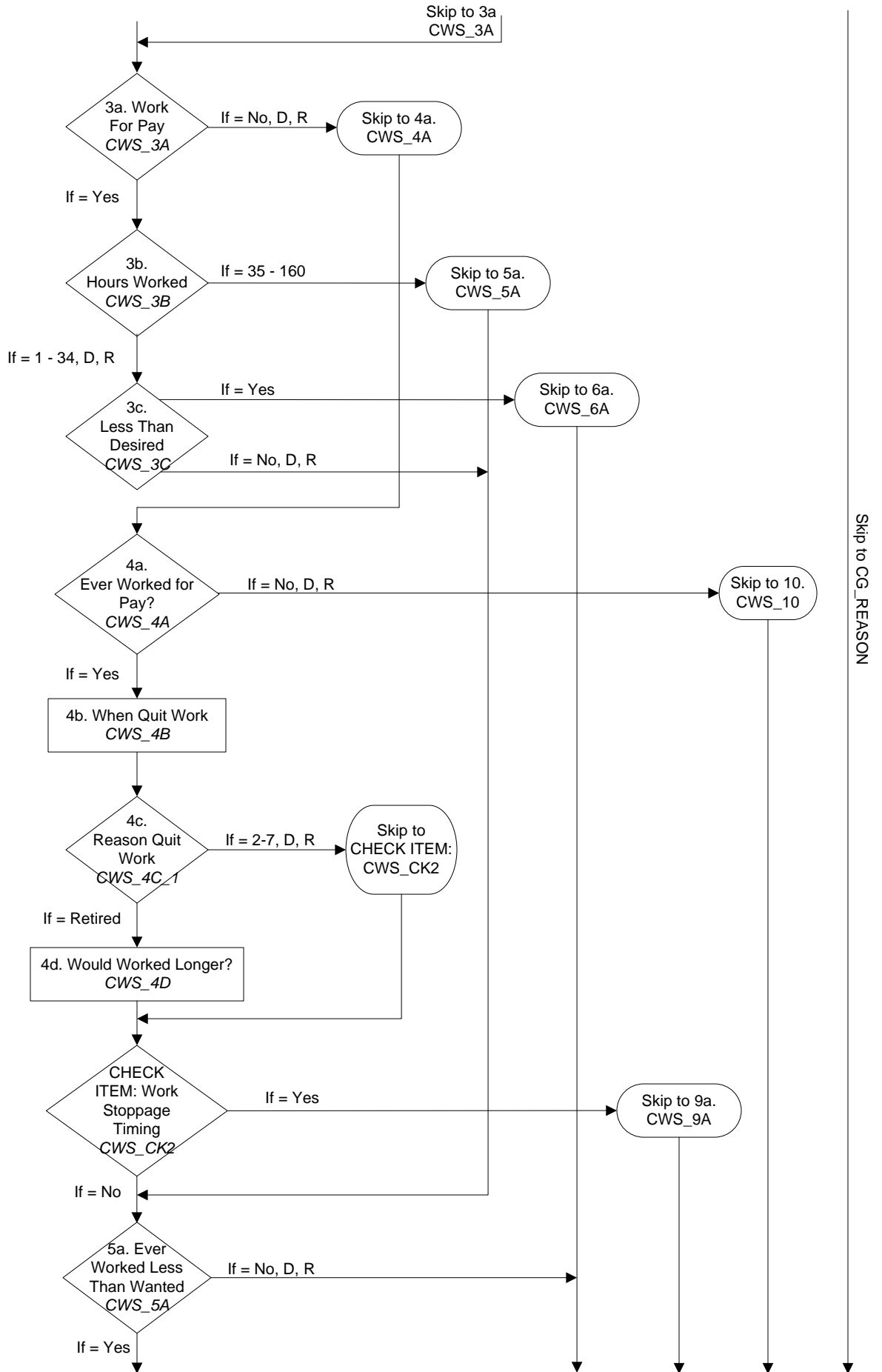


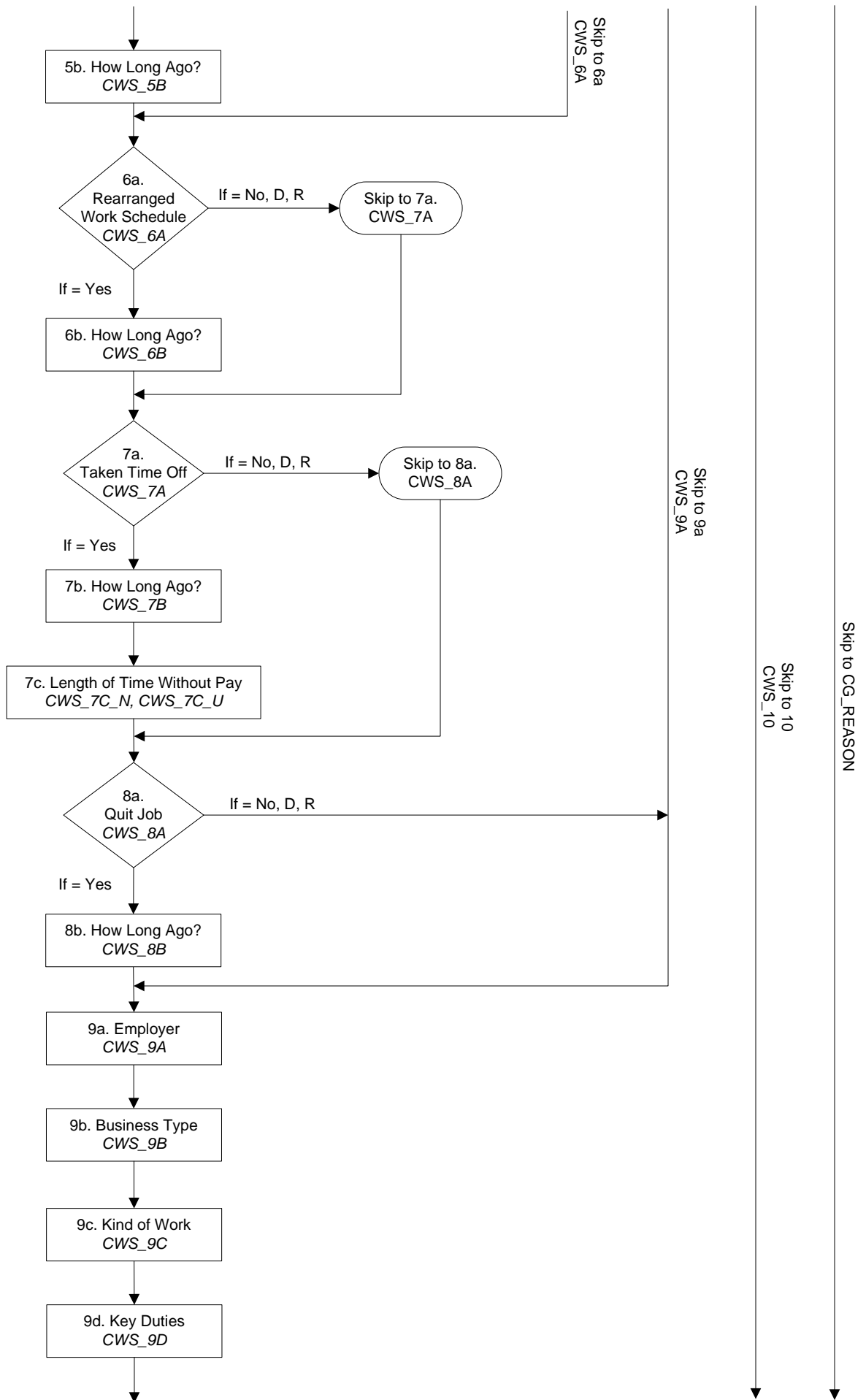
Skip to CG\_REASON

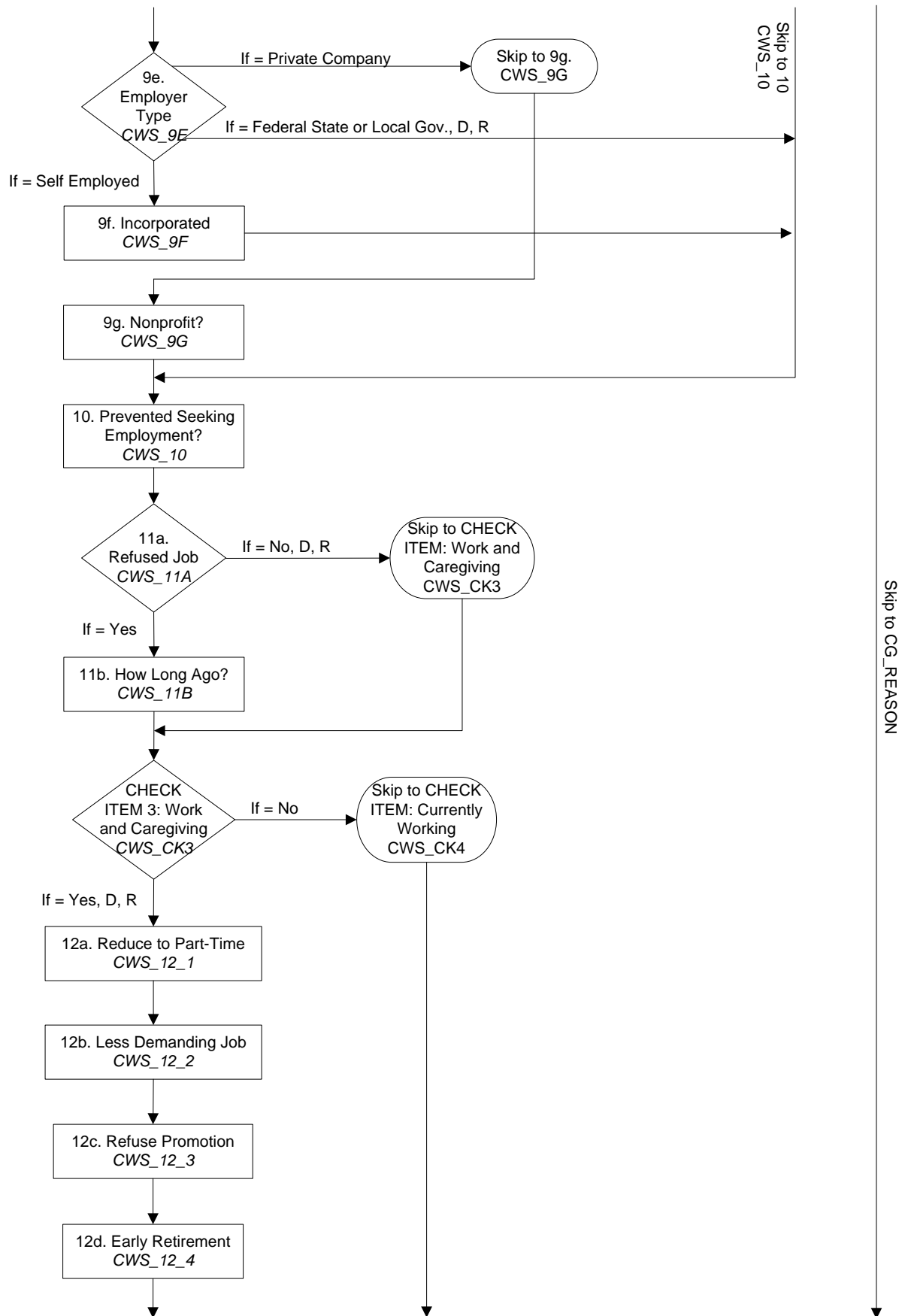
### SECTION E: Caregiver's Work Situation

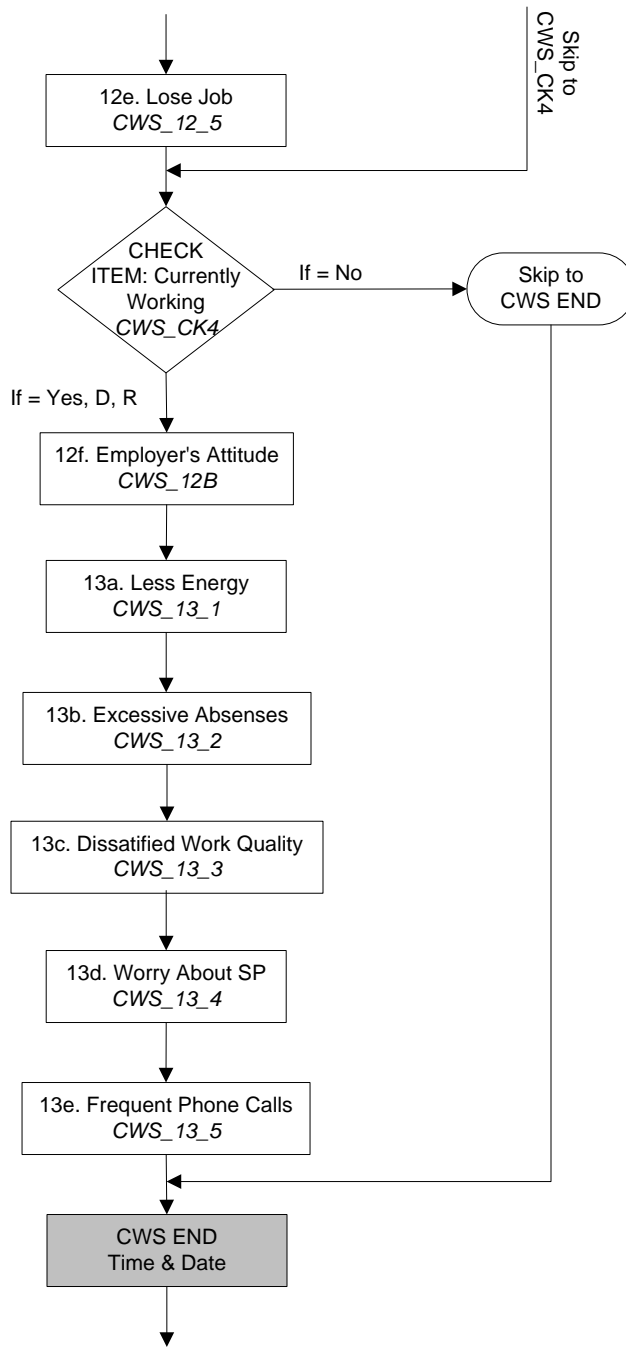


Note: Question 2 not used in 2004.



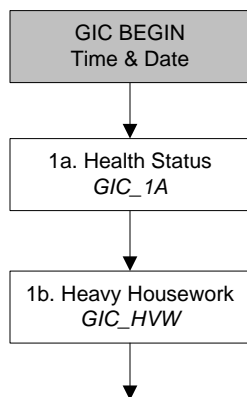


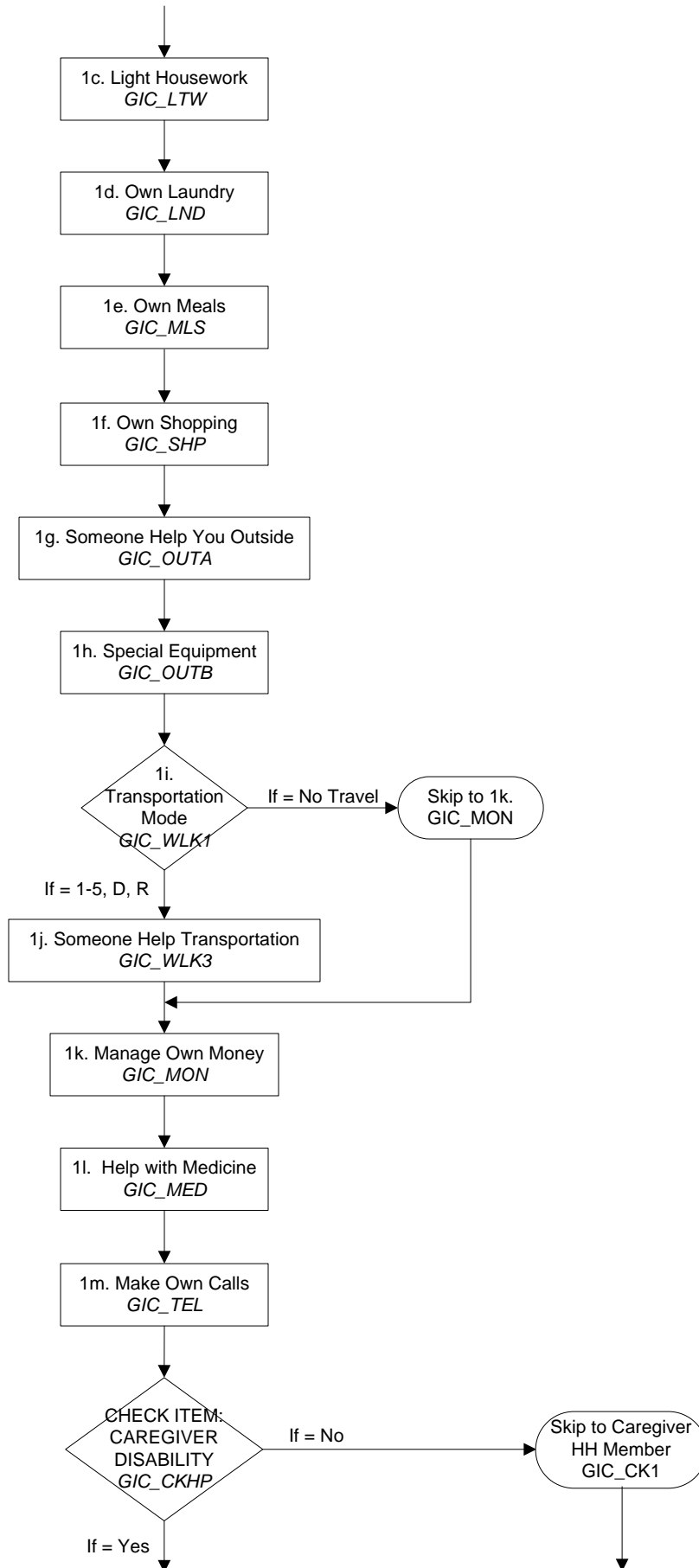




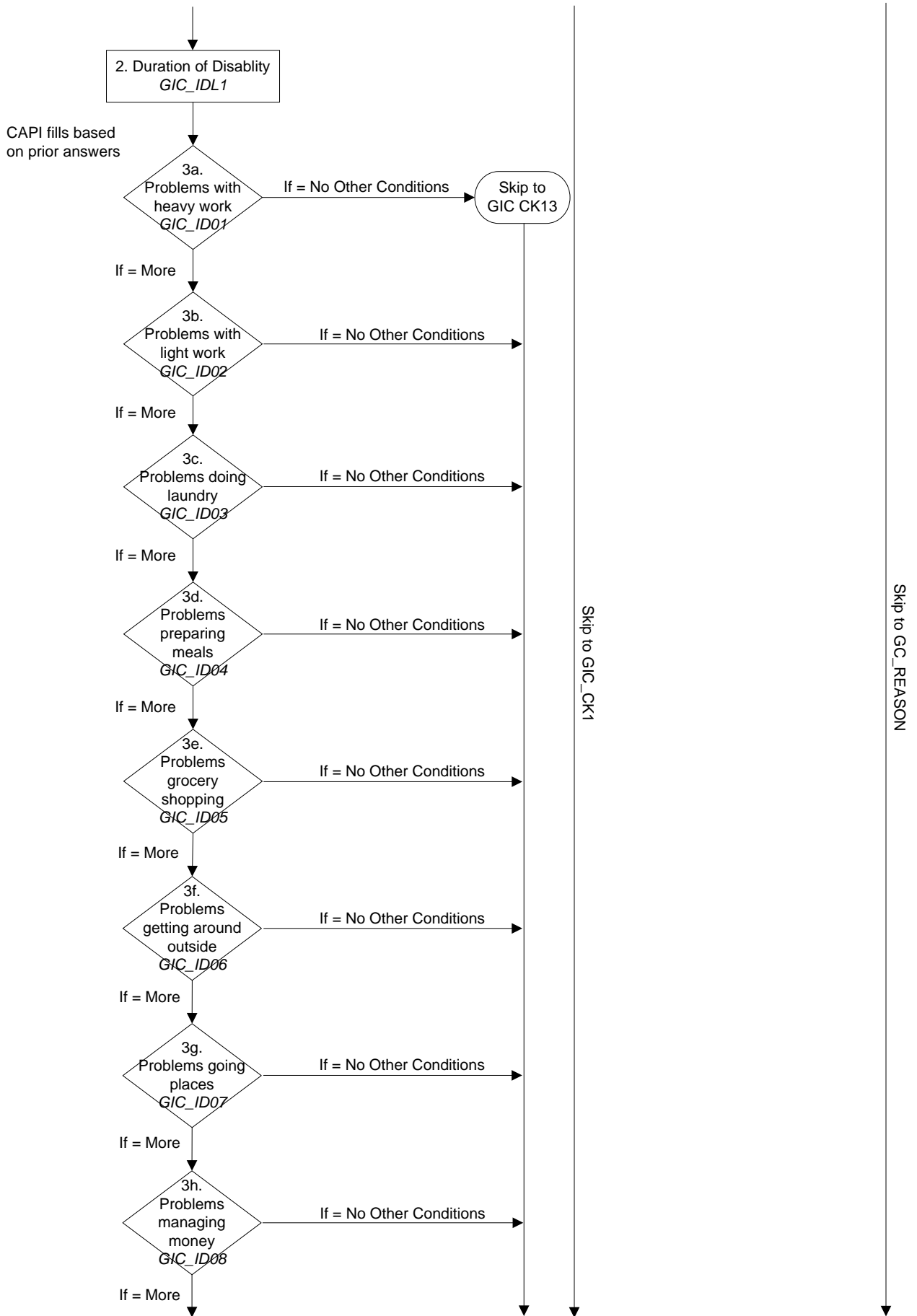
Skip to CG\_REASON

## SECTION F: General Information on Caregiver

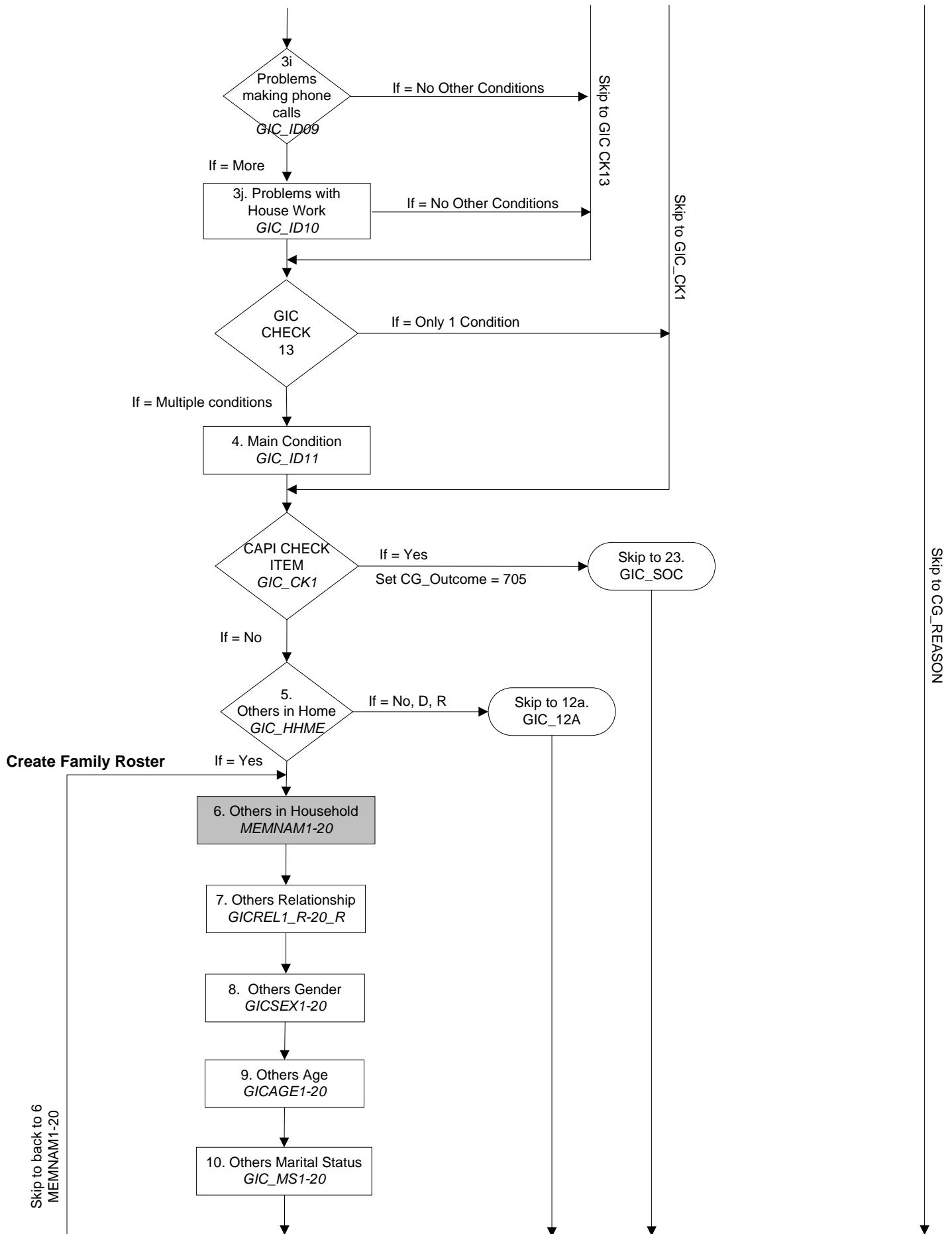


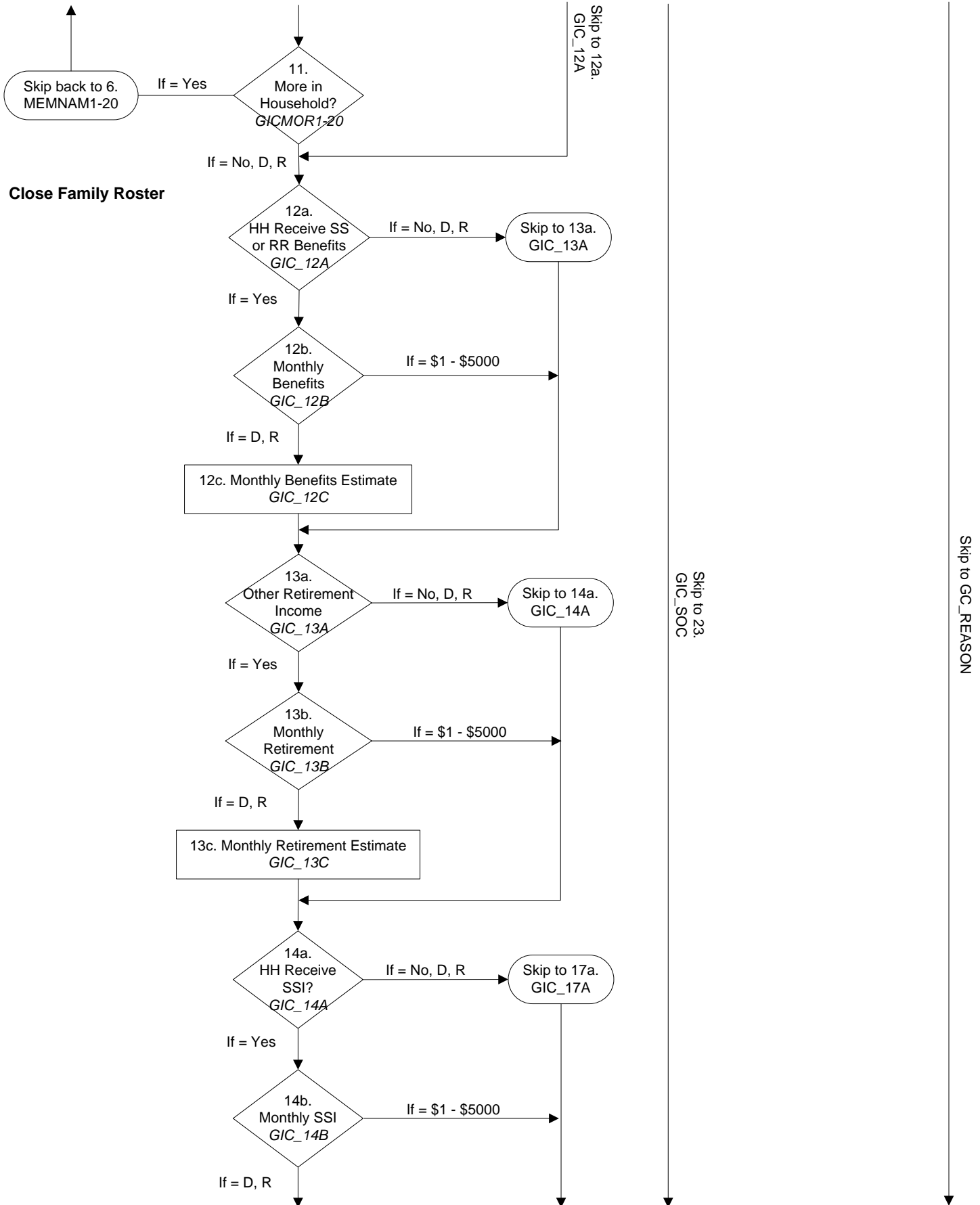


Skip to GC\_REASON

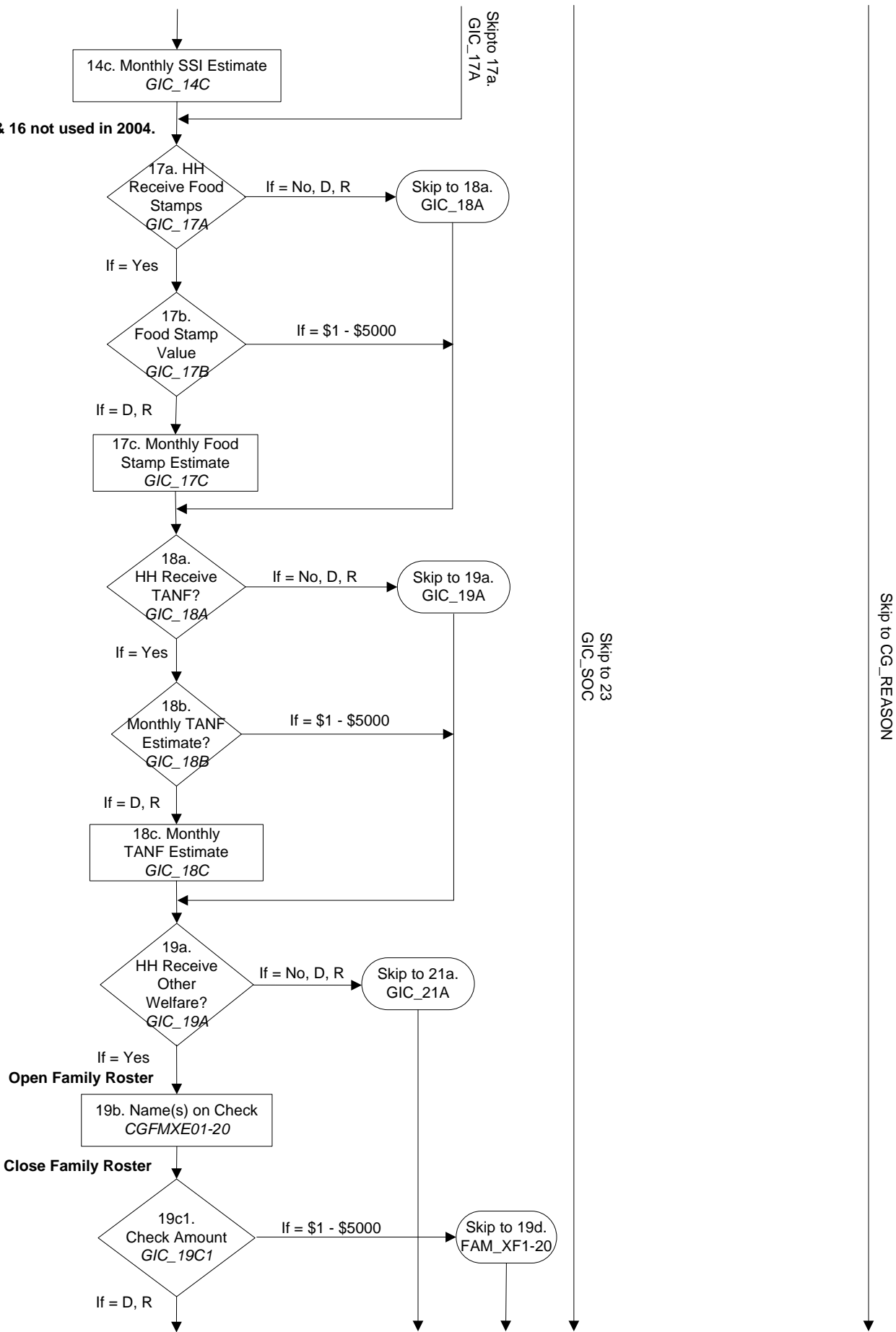


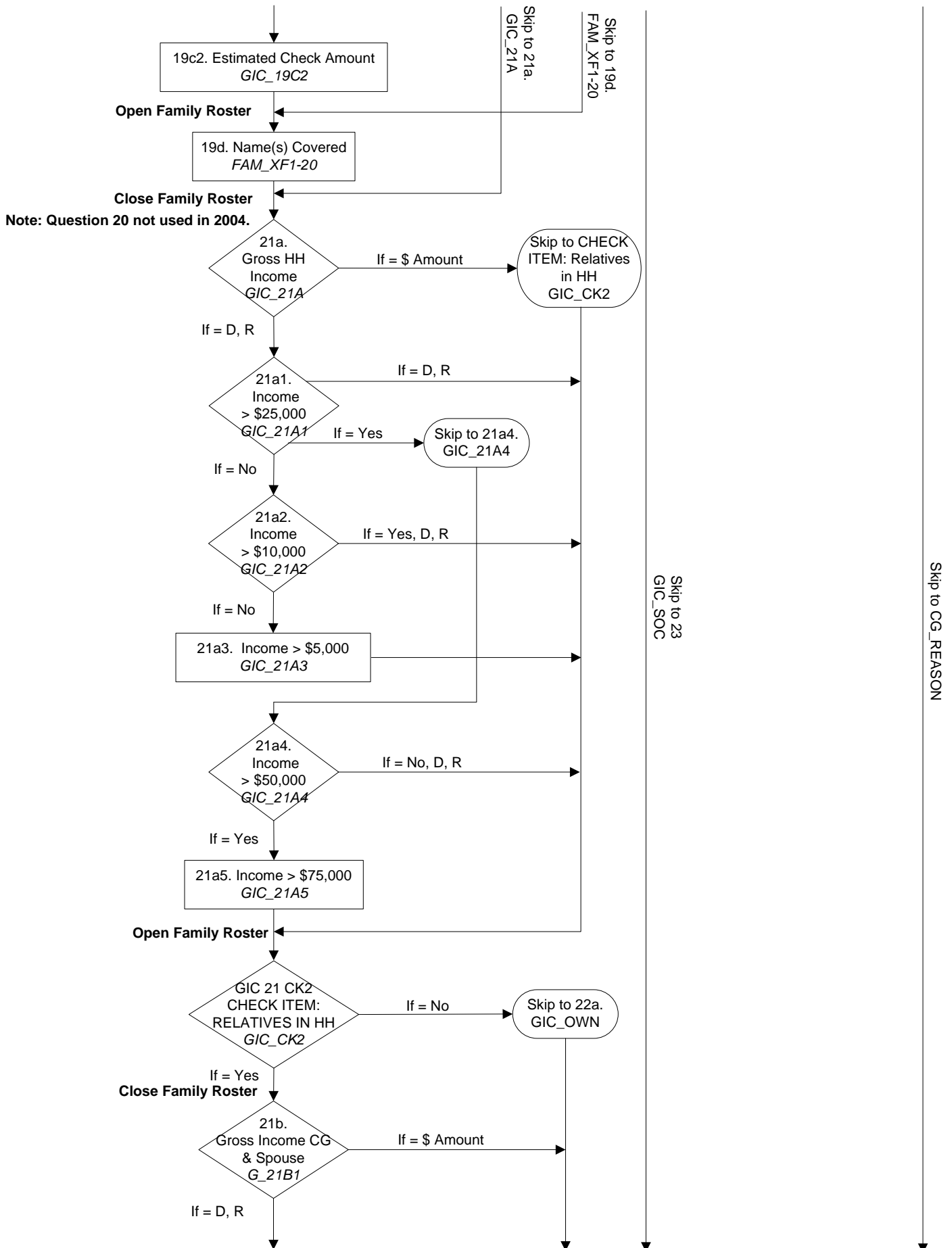


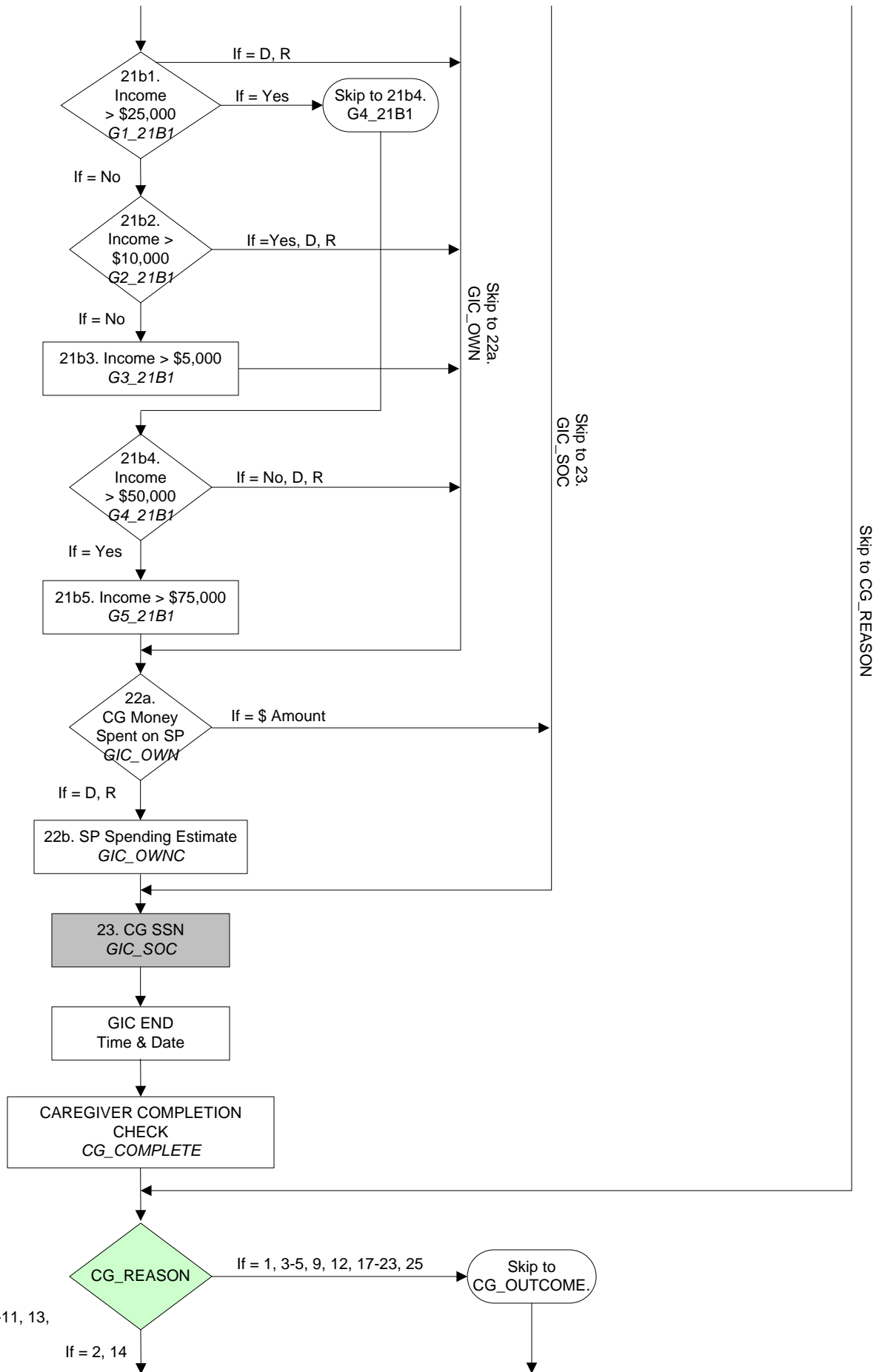




Note: Questions 15 & 16 not used in 2004.







Note: Responses 6-8, 10-11, 13, 15-16, 24 not used.

